

# LV450G

HYUNDAI WIA Gang Type Vertical Turning Center



# Technical Leader

The Gang Type Vertical Turning Center LV450G, designed by HYUNDAI WIA with years of expertise and the latest technology, is designed to maximize productivity by high speed and accurate performance.



## LV450G

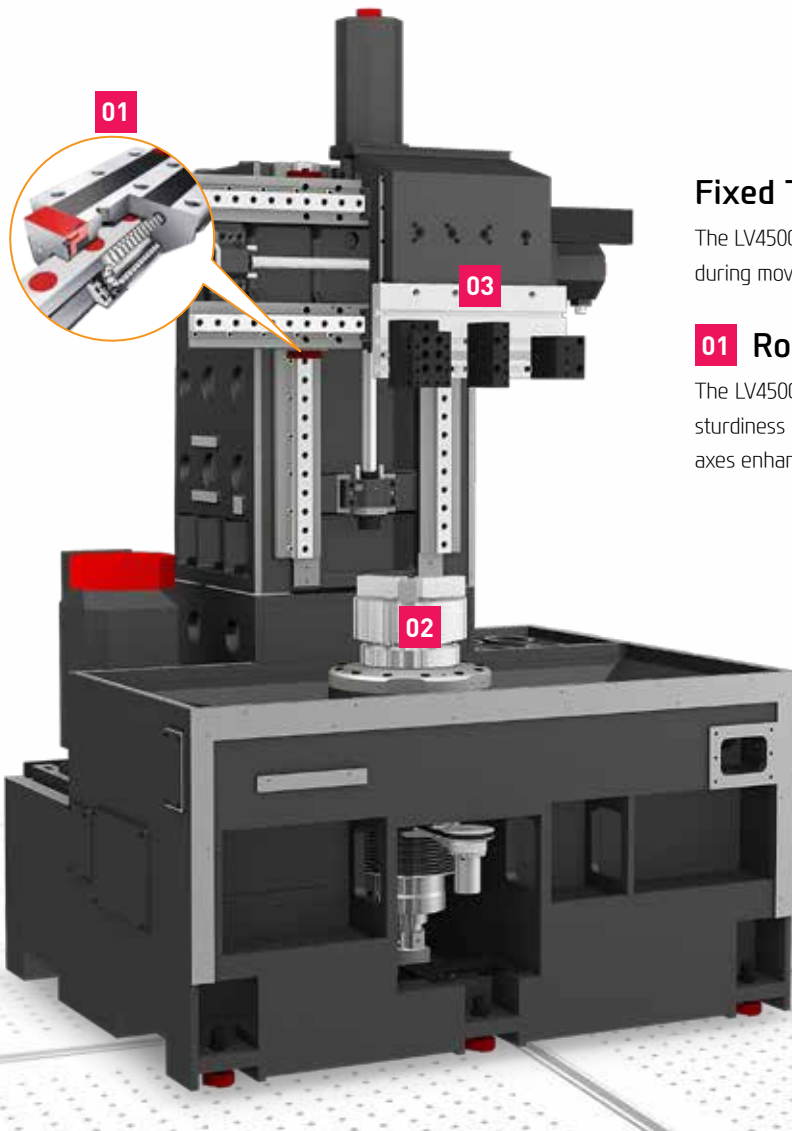
Max. Swing	mm(in)	Ø650 (25.6")
Max. Turning Dia.	mm(in)	Ø465 (18.3")
Max. Turning Length	mm(in)	495 (19.5")
Chuck Size	inch	12"
Spindle Speed	r/min	3,000
Motor (Max/Cont.)	kW(HP)	22/18.5 (30/25)
Travel(X/Z)	mm(in)	500/495 (19.7"/19.5")
No. of Tool	EA	3



# 01 Basic Features

LV450G

The Most Advanced Mechanism,  
Revolutionized Productivity & High Performance

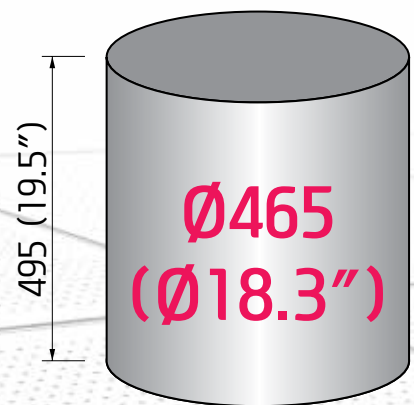


## Fixed Type Column

The LV450G is designed with a fixed column to minimize vibration during movements.

## 01 Roller Type LM Guideway

The LV450G is designed with roller LM guideways to meet the need for sturdiness and fast feed rate. The rapid traverse rate of 24m/min of all axes enhances productivity.



## Reduction of Non-Cutting Time by Fast Rapid Speed

- Rapid Traverse Rate (X/Z axis) : 24/24 m/min (944.9/944.9 ipm)
- Travel (X/Z axis) : 500/495 mm (19.7"/19.5")
- Max. Turning Dia. : Ø465 (Ø18.3")
- Max. Turning Length : 495 mm (19.5")

# 02 High-Precision Spindle

LV450G Cutting Edge Design & Optimized Cutting Condition  
Gang Type Vertical Turning Center

02

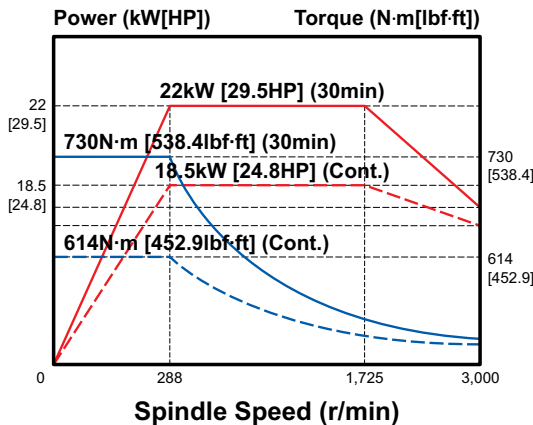


## Main Spindle

The highly rigid bearing structure of LV450G enables heavy duty cutting with excellent control of vibration and thermal displacement.

## 2 Step Pressure Chucking Device

The 2 step pressure chucking system enables high pressure chucking during roughing and low pressure chucking during finishing.



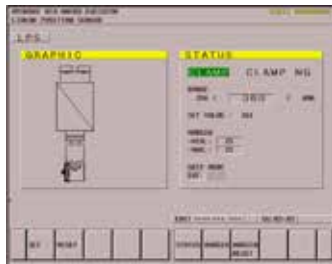
- ◎ Chuck Size : 12"
- ◎ Spindle Speed (rpm) : 3,000 rpm
- ◎ Motor (Max/Cont.) : 22/18.5 kW (29.5/24.8 HP)
- ◎ Torque (Max/Cont.) : 730/614 N·m (538.4/452.9 lbf·ft)

## LPS (Linear Position Sensor) Chucking Confirmation

### LPS (Linear Position Sensor)

Monitoring the clamping position of the chuck jaw and the status of clamping are possible with LPS. This easy to use control feature improves safety and convenience during frequent workpiece changes.

### The LPS Function



- [CLAMP] : Chuck clamping level within the scope → Normal
- [CLAMP NG] : Chuck clamping level exceeding the scope → Not normal
- [RANGE] : Range of chuck clamp/unclamp value
- [SET VALUE] : Input value of the sensor when the work is clamped
- [MARGIN] : Determine the scope of the range in addition to the set value
- [GRIP MODE] : Chucking screen of chuck clamping mode (O.D/I.D)

# 03 Gang Type Block Tool

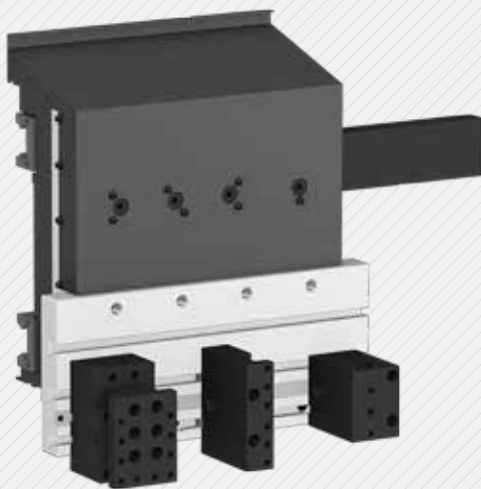
High Precision Mechanism  
Powerful Gang Type Vertical Turning Center

LV450G



## Reduction of Turret Index Time

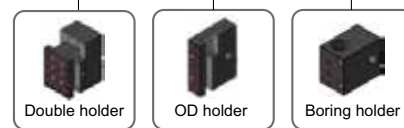
Productivity has improved. Because tool change time is reduced compare with turret type turning center.



- No. of Tool : 3 EA
- Table Size : 580×255 mm (22.8"×10")
- Tool Size (OD/ID) :
  - 25×25/Ø50 mm ( □ 1"×1"/Ø2")

## Gang Type Block Tool

By applying the gang type block tool, non-cutting time is reduced, resulting in greater productivity.

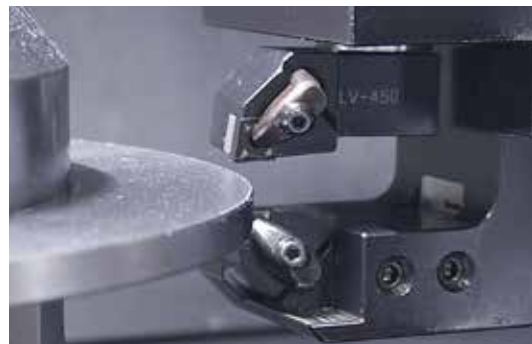


### Boring Holder

BORING BAR SOCKET	Ø16 (5/8")	EA	1
	Ø20 (3/4")	EA	1
	Ø25 (1")	EA	1
	Ø32 (1 1/4")	EA	1
	Ø40 (1 1/2")	EA	1
DRILL SLEEVE	MT2	EA	1
	MT3	EA	1
	MT4	EA	1

### Straddle Tool **OPTION**

The straddle tool enables simultaneous machining of both sides which enhances productivity.



# SPECIFICATIONS

## Specifications

ITEM		LV450G	
CAPACITY	Max. Swing	mm(in)	Ø650 (Ø25.6")
	Max. Load Capacity	kg(lb)	200 (441)
	Max. Turning Dia.	mm(in)	Ø465 (Ø18.3")
	Max. Turning Length	mm(in)	495 (19.5)
SPINDLE	Chuck Size	mm(in)	12"
	Spindle Bore	mm(in)	Ø62.4 (Ø2.5")
	Spindle Speed (rpm)	r/min	3,000
	Motor (Max/Cont.)	kW(HP)	22/18.5 (29.5/24.8)
	Torque (Max/Cont.)	N·m(lbf·ft)	730/614 (538.4/452.9)
	Spindle Driving Method	-	BELT
	Spindle Nose	-	A2-8
FEED	Travel (X/Z)	mm(in)	500/495 (19.7"/19.5")
	Rapid Traverse Rate (X/Z)	m/min (ipm)	24/24 (944.9/944.9)
	Slide Type	-	ROLLER LM GUIDE
TURRET	No. of Tool	ea	3
	Tool Size (OD/ID)	mm(in)	□ 25/Ø50 (□ 1"/Ø2")
	Indexing Time	sec/step	-
MACHINE	Floor Space (L×W×H)	mm(in)	1,800×2,610×2,980 (70.9"×102.6"×117.3")
	Weight	kg(lb)	7,500 (16,535)
PC	Controller	-	HUNDAI WIA FANUC i Series

Specifications are subject to change without notice for improvement.

## External Dimensions

unit : mm(in)

